

TONEMAI

technical specifications [nov 2017]



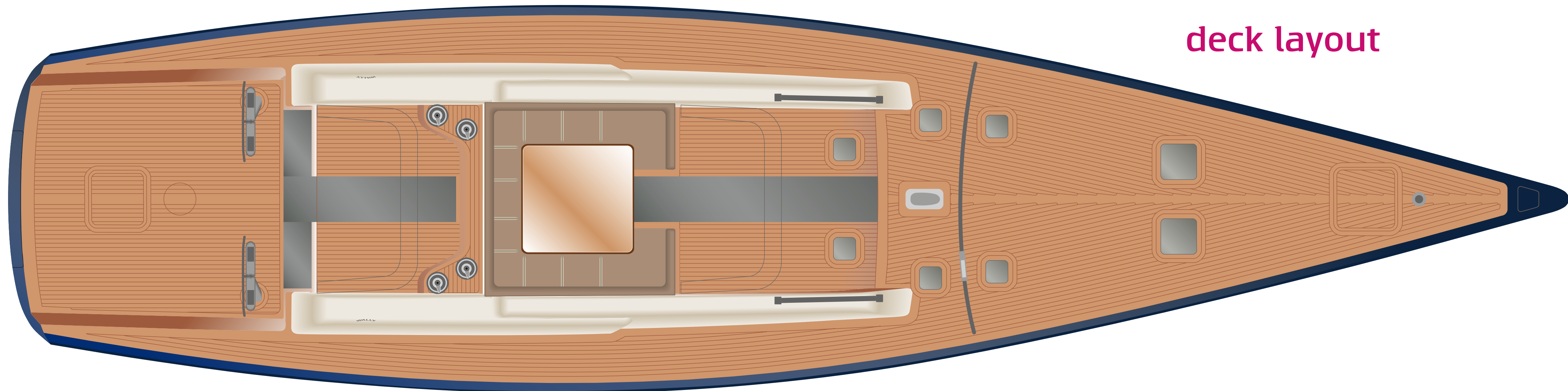
specifications

builder	Wally
year	2004 - refit 2019, 2013, 2017
length	23,99 m
beam	5,96 m
draft	4,13 m
location	Tuscany, Italy
flag	Italian
hull	Advanced composites

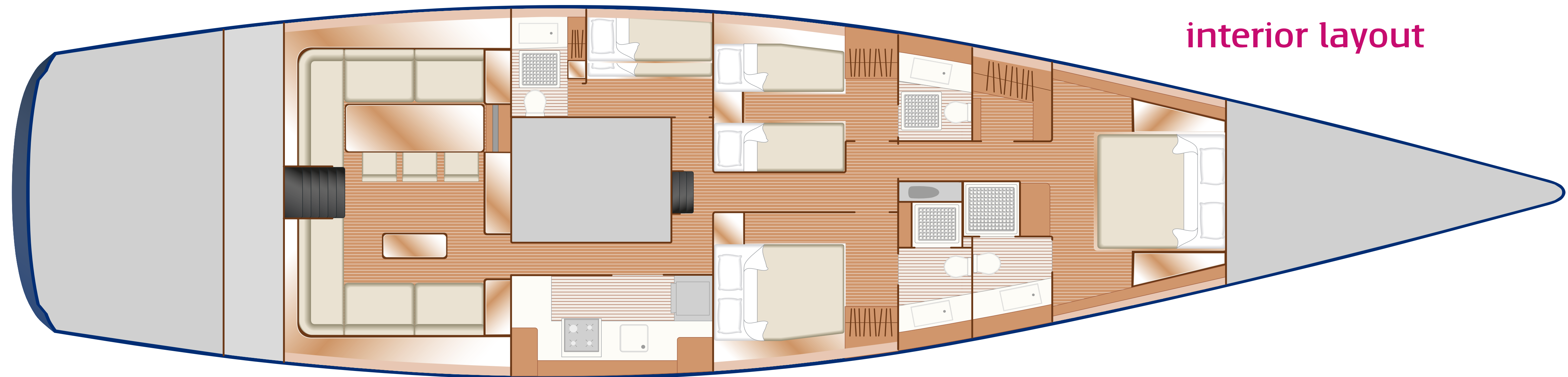
accommodation

guests cruising	15
guests sleeping	6+1
cabins	3 guests + 1 crew
crew	2+1





deck layout



interior layout

technical information

engine	Yanmar 250 HP
cruising speed	10,00 knots (engine)

dimensions

length OA	23,99 m
length WL	21,23 m
beam	5.96 m
draft	4,13 m
displacement	35 t
ballast	13 t
sail area	321 m²

construction

hull	Advanced composite pre-preg carbon cured @ 120°C
keel	Steel casted fin, lead torpedo bulb
deck finish	Teak
naval architect	Farr Yacht Design
exterior designer	Wally
interior designer	Wally/Lazzarini Pickering Architects

classification

class	RINA CE certificate - Category A
-------	----------------------------------

performance

speed	10,00 knots by engine
-------	-----------------------

rigging

rig	Semi-fractional, swept back spreaders, full-width based, no running backstays, self-tacking jib rail, 110% sail track inside coamings
mast	Hall Spars, high modulus carbon
boom	In-furling by Marten Marine, high modulus carbon
rigging	Continuous carbon fibre rigging, large selection of sheets and halyards
jib furling system	Wally with carbon foil
code 0 furling	Manual

sail inventory

OneSails Racing

2011	M3 Carbon Main
2011	Code 0 Vektor Carbon
2013	M3 Carbon #2 Jib
2015	4T 215R #3 Jib
2012	Nylon A3
2015	Nylon A2
2013	M3 Taffeta #4 Jib
2010	M3 Laminate #2 Jib
2010	M3 No batten Laminate #3 Jib
2011	A1

North Sails Racing

2009	A2
------	----

OneSails Cruising

2012	Main
2012	Jib

machinery

engines	Yanmar 250 HP (2013)
engine hours	1785 (November 2017)
generator	Onan 17,5 kW (2013)
generator hours	2391 (November 2017)

steering & propulsion

steering	Mechanical, aluminium sector on rudder post
propeller	Gori, 4 folding blades (2013)
gearbox	Mechanical, Reggiani Hurt V-drive 630

tankage (approximate)

fuel	2.000 l
fresh water	1.300 l

auxiliary equipment

water maker	Tecnicomar 180 l/h
air-conditioning	Frigomar
toilet system	Tecma Ceramic
hydraulic	Wally hydraulic sail system; Cariboni Magic Trim rams: 2x for the mainsail, 1x for the self-tacking jib
deck hardware	4x winches Harken 11 10.3 STA HY (2 hydraulic, 2 electric with free spinning base)

electrical system

System	Furlanetto
Voltage	220
DC SYSTEM	24
Frequency	50 Hz
Inverter	AGF Electronics
Battery chargers	2X Mastervolt 24/100
Batteries	Lights 4X 6V Service 12X 2V Engine 1X 12V Generator 1X 12V

navigation equipment

GPS Raymarine E90W
GPS Furuno GP90 (on plotting desk)
GPS Antenna Raymarine 112LP
GPS Plotter Raymarine (on steering column)
Raymarine Radar 18
Auto Pilot B&G Hercules
Depth sounder B&G Hercules
Echo sounder B&G Hercules
Speedometer B&G Hercules
Wind instruments B&G Hercules
7x B&G FFD display (4 on main deck, 1 plotting desk, 1 master cabin, 1 crew cabin)
5x B&G 20/20 display on the mast heel
1x Lenovo Computer

communication and satellite equipment

vhf	Furuno FM 2721
broadband internet	WiFi with 4 repeaters
vhf hand held radio	Icom
sat-tv	Seatel 1898E Sat TV antenna with satellite Identification receiver version 1.4

entertainment equipment

saloon	Samsung LCD 30" Smart tv Cocktail Audio A/V Amplifier Apart Revamp 1600 Bose 5+1 surround system Sony Blueray Sky HD decoder
master cabin	Samsung LCD 30" Smart tv 2x Bose Speakers Sony Blueray Sky HD decoder
main deck	4x Bose Speakers (2 in rudder cockpit and 2 in central cockpit)
B&O	Beosound System throughout the entire boat

domestic appliances, equipment and laundry

refrigerator	3x Frigonautica
freezer	Frigonautica
oven	Alpes
stove	Alpes
dishwasher	Miele
washing machine	Miele Softronic WT2670

accommodation

6+1 guests in 3 cabins	
2 crew in 1 cabin + 1 in forepeak	
owner’s stateroom	1 queen size bed, en-suite head and shower room, separated dressing room
guest cabin	2 beds + 1 pullman, en-suite head and shower
guest cabin	1 queen size, en-suite head and shower
crew cabin	2 beds, en-suite head and shower
forepeak	1 bed, en-suite head

deck equipment

anchor system	Wally submarine
anchor & chain	Wally custom anchor, 110 m chain
windlass	Lewmar 3500
mooring capstan	Sanguineti
bathing ladder	Carbon/titanium manual
passarelle	Carbon manual

safety & security

anchor liferafts	2x Avon Modula Super 6pp
lifebelts	18
MOB devices	2x Jonbuoy
EPIRB	MCMurdo Smartfind

tenders & toys

tender	Zodiac “Cadet 310 RIB” with outboard Honda 20 HP
--------	--------------------------------------------------

refit works 2009 and 2013

New engine Yanmar 250 HP
Revised ZF 80 transmission by maker
New Gori 4 folding blades propeller (27')
New Onan generator 17,5 kW (500 h)
New fridge compressors
New AirCon system
Revision of all other pumps by makers
New custom carbon engine panel
New plexy glasses + 4x tempered glass
New all hatch rams
New all mosquito nets and shades of all hatches
New paint in engine room, lazarette and technical spaces
New fresh water pipes (PVC)
Revision of PTO, and all rams
New backstay
80% new halyards and sheets
New racing main OneSails
New racing jib OneSails
New jib #4
New furler code 0
New paint work of deck
New pulpits and stanchions
New head foil
Revision of all the electrical SYS
New vertical shrouds vertical turnbuckles

refit works 2017

New stern shower
Some teak plank replacement
In boom furling motor serviced
Hydraulic system by Cariboni serviced
New paint on transom
All sea water pipes and filters serviced
New bilge motor valves

Service of:

Windlass
Mooring capstan
4 Tecma Sanisplits wc
Fresh water pump
A/C sea water cooling pump
Fridge's sea water cooling pump
High and low pressure water maker pumps
Water maker membranes
Water maker hydraulic control panel
Dishwasher

DISCLAIMER

Wally offers the details of this vessel for sale in good faith but cannot guarantee or warrant the accuracy of this information nor warrant the condition of the vessel. Any interested party should confirm such details of concern to them by inspection or requesting verification from the seller. Wally always strongly recommends an independent survey and sea trial. This vessel is offered subject to price change, prior sale or withdrawal without notice.

