



# BARE NECESSITIES

**Length:** 24.17 metres (79' 4")

**Beam:** 6.23 metres (20' 5")

**Draft:** 3.05 metres (10')

**Number of Guests:** 6

**Number of Crew:** 3

**Built:** 2004

**Builder:** Oyster Marine

**Naval Architect:** Rob Humphreys

**Flag:** British

**Hull Construction:** GRP

**Hull Configuration:** Displacement

Air conditioning

TV in saloon and cabins

DVD, CD radio and iPod connectors

Waterproof speakers in the cockpit

---

Bare Necessities is a stunning 82' custom built Oyster, designed to deliver a luxurious sailing experience. From first glance you will notice the stunning hull colour of metallic blue with metallic silver boot top and cover lines. Her size and uncluttered teak deck is perfect for entertaining. The large cockpit with two tables can comfortably seat guests for eating 'al fresco'.

Bare Necessities has a custom built archway above centre cockpit with integrated lights and custom carbon framed windscreen to protect the main companionway providing

excellent shelter as well as sun protection. Her powerful cutter rig with carbon Smart boom, top quality laminate sails with main being fully battened, hydraulic furlers all go to provide exceptional performance with minimum effort.

Below deck, her maple interior makes her very light and makes for a very open feel. The upper saloon offers excellent views with large deck saloon windows and has a 42" screen neatly flushed in. The lower saloon has a large L-shaped settee with another folding table. This is a wonderful area to read, play games or watch movies on the 32in screen.

Bare Necessities provides spacious accommodation for six guests in three cabins, while separate accommodation for crew is provided forward. The master cabin has a spacious centre line queen berth. In addition, there are two identical guest cabins also aft with twin berths. All cabins throughout the yacht have a private en-suite head and shower.

Bare Necessities is an ideal family charter yacht.











# SPECIFICATIONS

## ACCOMMODATION

**Number of Guests:** 6

**Number of Cabins:** 3

**Cabin Configuration:** 1 Double, 2 Twin

**Bed Configuration:** 5 beds

## EQUIPMENT

**Cruising Speed:** 9 knots

**Fuel Consumption:** 8 Litres/Hr

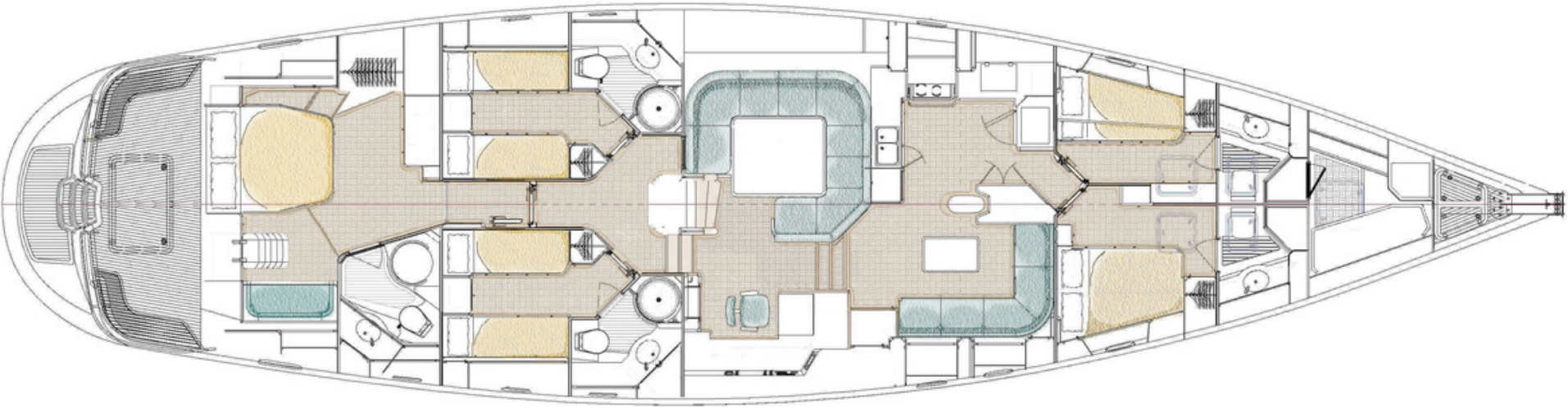
## WATERSPORTS

**Tenders + Toys:** - 7 Man Zodiac w/ 50Hp

- Adult and children water skis
- Towing ring
- Towable inflatables including banana boat
- Snorkel and diving equipment
- Fishing equipment



LAYOUT



## **Disclaimer**

This document is not contractual. All specifications are given in good faith and offered for informational purposes only. The publisher and company do not warrant or assume any legal liability or responsibility for the accuracy, completeness, or usefulness of any information and/or images displayed. Yacht inventory, specifications and charter prices are subject to change without prior notice. None of the text and/or images used in this brochure may be reproduced without written consent from the publisher.